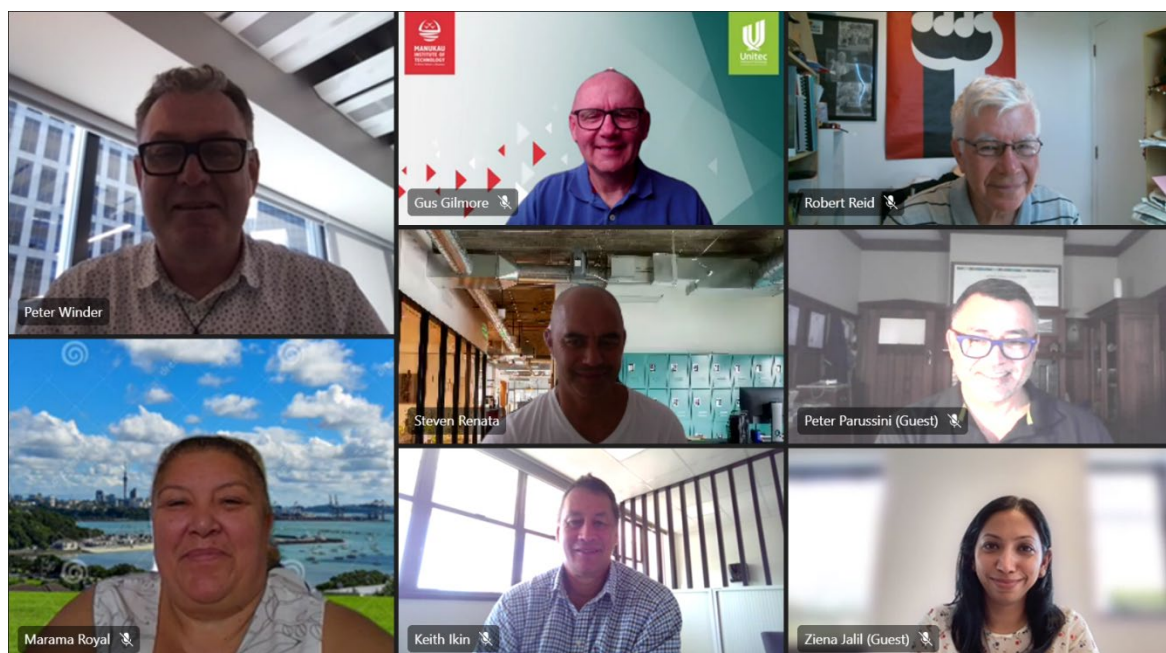


Title: Unitec-MIT Board highlights March 2022



The Board met for the first time this year online. The meeting began with those present acknowledging the sad passing of Dame June Jackson and Dr Moana Jackson. This was led by Pou hautu Keith Ikin and Matua Vince Hapi who recognised the contribution both had made to Māori aspirations and Aotearoa as a whole.

RETURNING TO CAMPUS

Directors heard both institutes were moving towards greater on campus teaching and working in coming weeks. This is in response to the peak of the Omicron outbreak passing in Tāmaki Makaurau.

Unitec is reviewing its risk assessment after the Government removed the requirement to hold vaccination certification for on campus delivery of tertiary education from the COVID-19 Protection Framework's Red setting.

Consultation with staff on the resulting policy changes has been completed. Employees are being strongly encouraged to begin returning on site from Monday 4 April. A return to campus for teaching and learning has been scheduled for after the mid-semester break.

MIT is following the same overall guidance. Masking policies, social distancing and increased Rapid Antigen Testing will act as layers of protection against virus spread. There is also an emphasis on managers exploring flexible working options with teams. Both institutes have high levels of vaccination among staff and students.

The Board was told classroom or workshop-based teaching is the accredited delivery mode for the majority of courses.

MANA WHENUA ENGAGEMENT

The Pou hautu update directors on work in progress to develop a high-level approach to Māori engagement with vocational education in Tāmaki.

Two hui are proposed for later in the year. The first of these to be hosted by Ngāti Whātua o Ōrākei and the second by Waikato-Tainui. The desired outcome is a statement of consensus on the future of Māori vocational education on the isthmus to be presented to Te Pūkenga. The local Regional Skills Leadership Group is also involved in this work.

Marama Royal said holding two forums was necessary due to the number of Tāmaki iwi. The kaupapa will focus on the collateral damage caused in education, housing and whānau by COVID-19 health and economic impacts, she said.

TE PŪKENGĀ TRANSITION

The Chair led a discussion between the Board and leadership on the best focus areas to ensure smooth transition with less than twelve months before the subsidiary structure is disestablished.

A range of suggestions were received including refocusing on regional strategy planning and developing a capital asset strategy for Tāmaki.

A staff survey at MIT has identified uncertainty felt by staff due to current the change process as a key issue.

It was resolved a meeting would be requested with the Chair and Chief Executive of the national body to relay insights, as well as receive further updates and information on transition progress.