

# Year 4 – Master

---

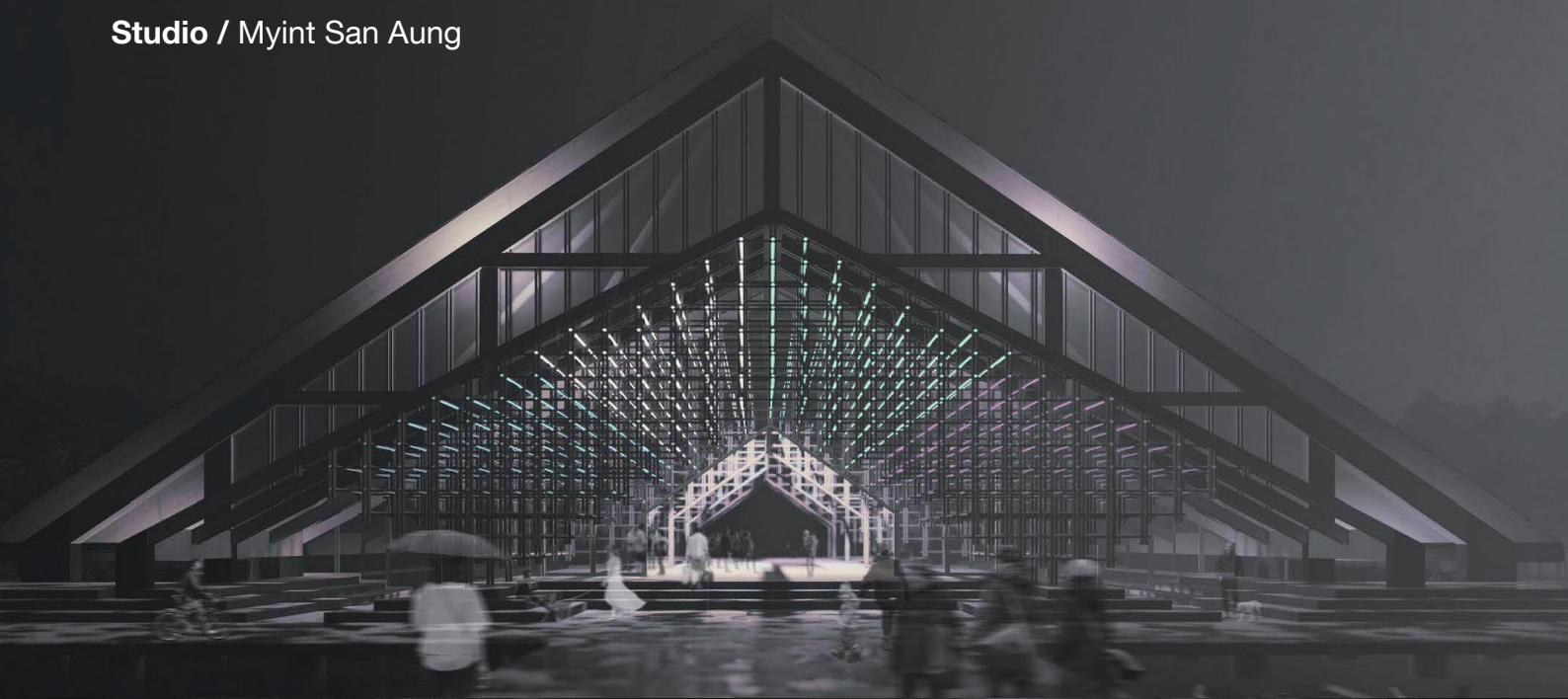
This chapter illustrates the incredible effort that our **Master of Architecture (Professional)** first-year students put into their work. Studio was centred around the city of Shanghai, and was divided into two sections.

*The Drawings from Shanghai project was an in-depth exploration into the future form of the city itself. Through a series of thought-provoking texts, many questions were raised about the density and future of the compact city. These drawings brought many ideas and design proposals to light.*

*The project revolving around tectonics, porosity and performance aimed to explore the synergetic relationship between designed and structural tectonic elements of a select piece of architecture based in Pudong, Shanghai. The design aimed to achieve a highly sustainable and modern design outcome based on heavy exploration into materiality and sustainability, as well as contemporary design solutions.*

Sian Singh, Bhavya Gajjar and Sheena Pindoria  
MArch(Prof) first-year students

44



# Escape the Compact City

## Studio

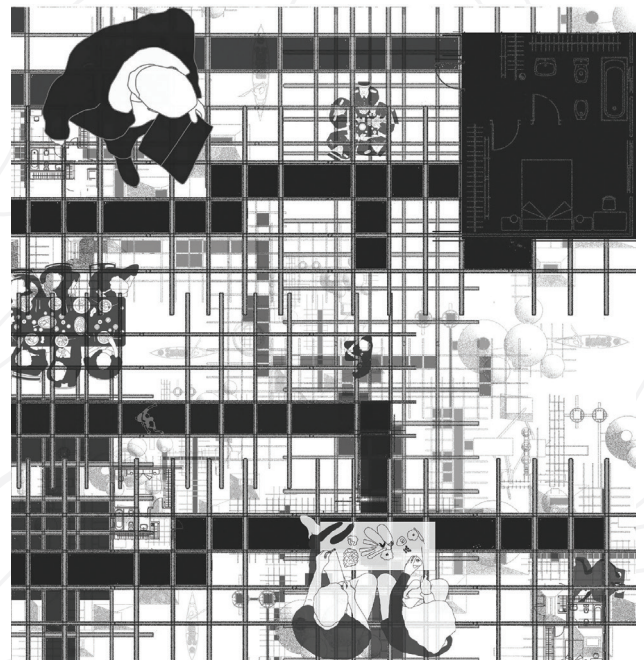
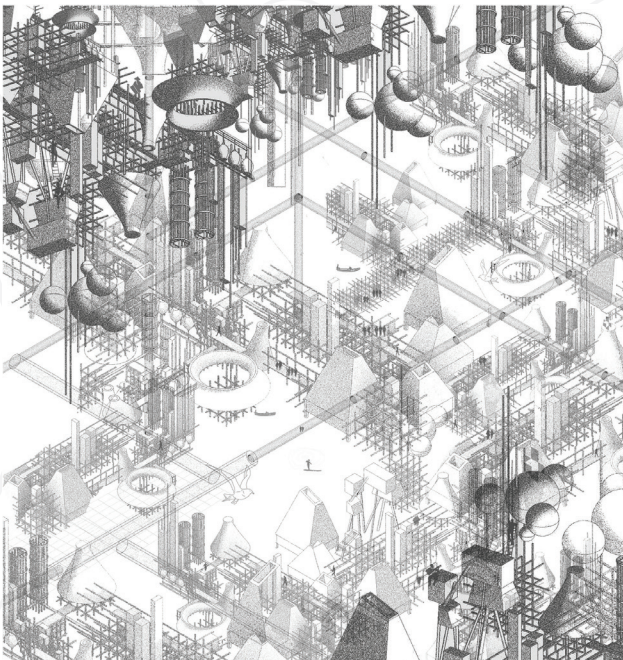
### Myint San Aung

We cannot picture the way our future cities will look. However, we do know that currently cities are growing very quickly, with a rising adverse impact on the environment. Due to this immense growth, we begin to lose our sense of community, belonging in the world, and our connection to nature.

In the future, we may build cities so dense that views of the sky and nature could be blocked. Architecture is more than the art of decorative building. It is also a social art with a considerable number of disciplines. Future cities may allow individuals to create their own unique style of living in a set of governing rules.

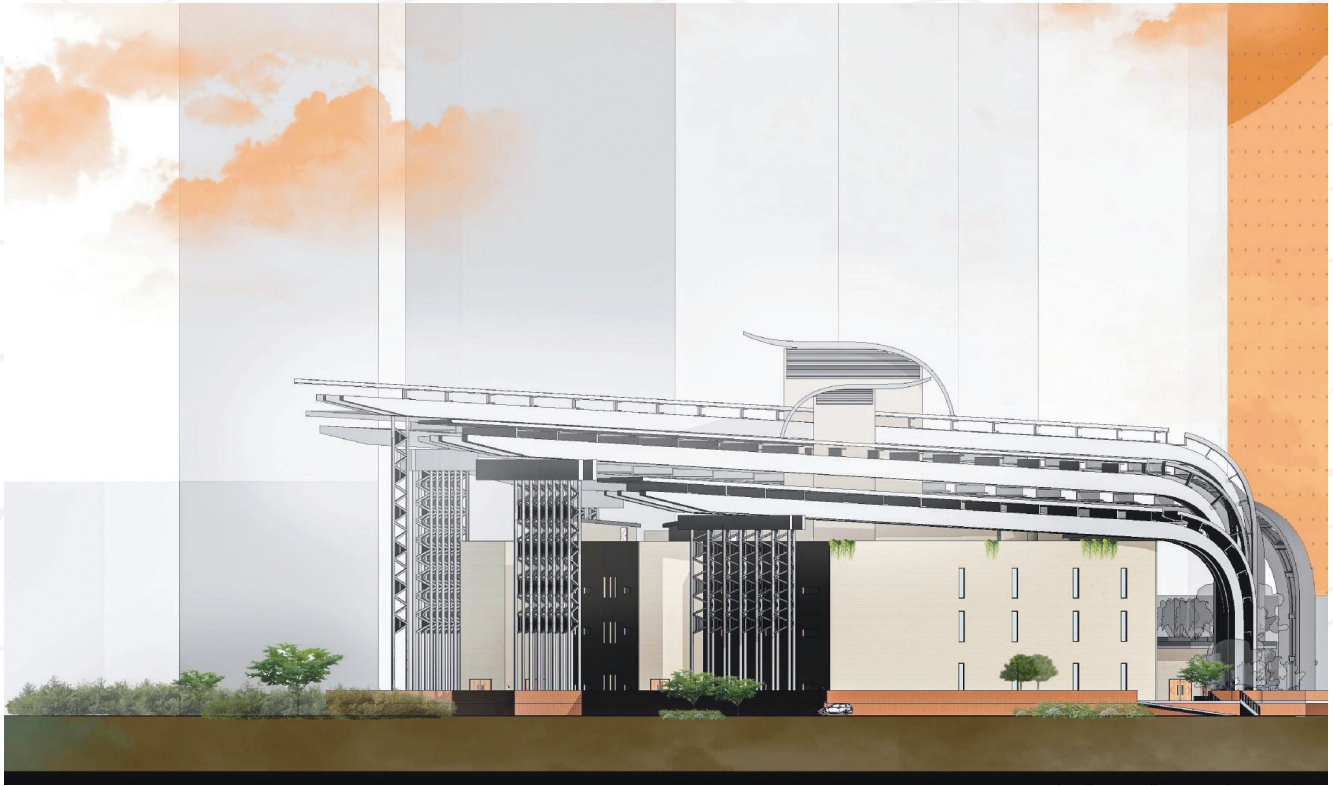
Human depletion and alteration of natural ecosystems poses a constant threat to every living being, including ourselves. We, as designers, must minimise the destructive effects on the earth's ecosystems and resources, and simultaneously prioritise the continued elimination and minimisation of these destructive effects.

These illustrations show a vision of how we may start to escape compact city life by inventing new ideas to adapt to changes. We may start to use new means of transport, and use rivers and seas as additional living spaces. We could resolve our relationship with nature and use clean, sustainable energy to power our new cities.





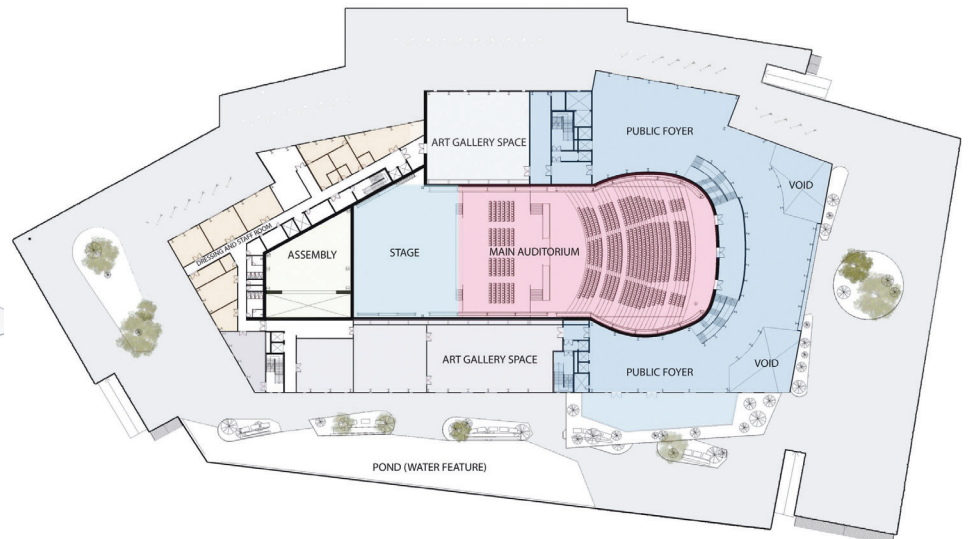
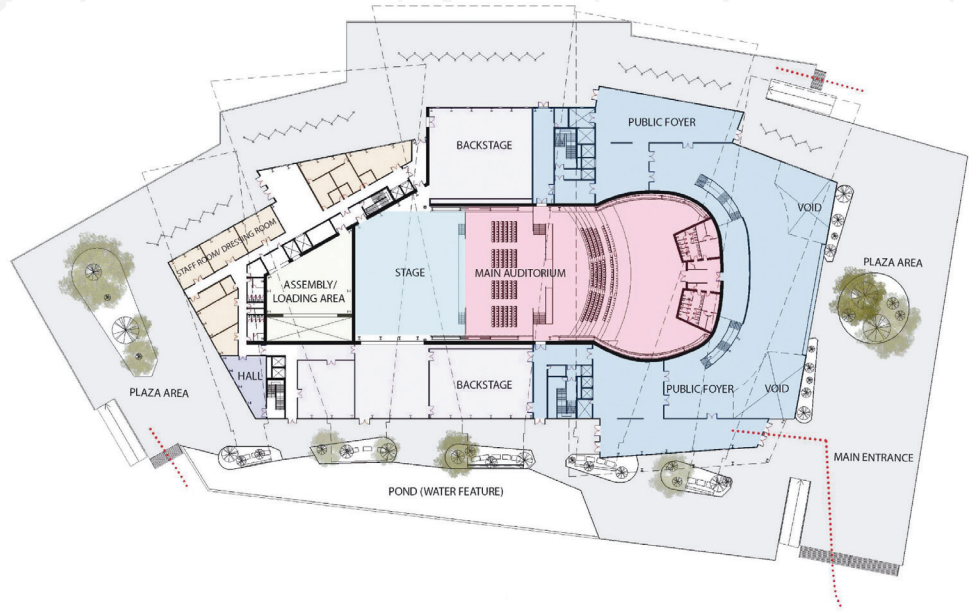
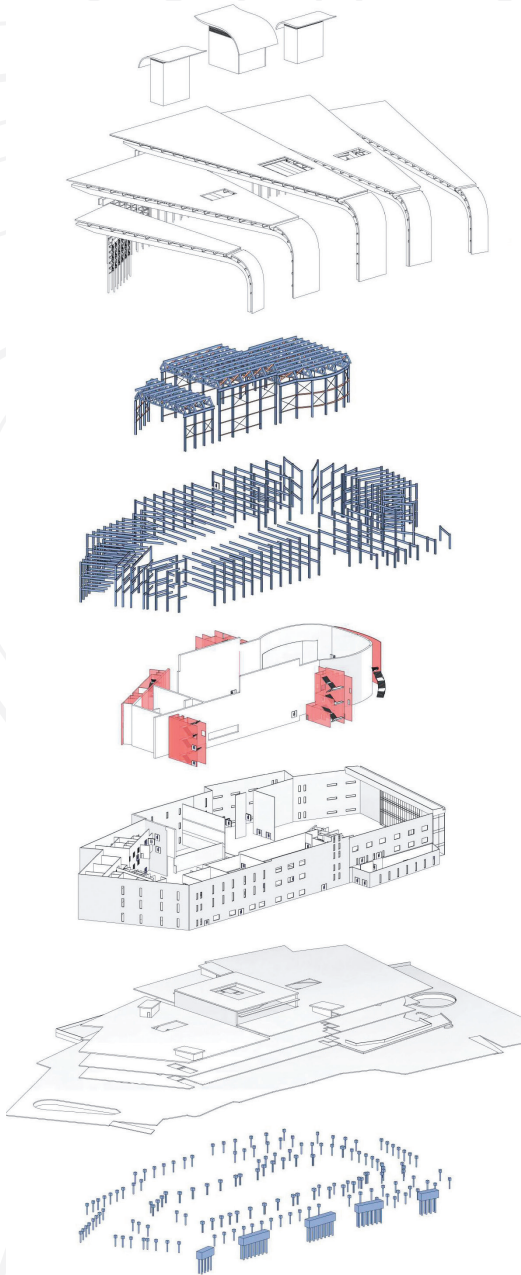




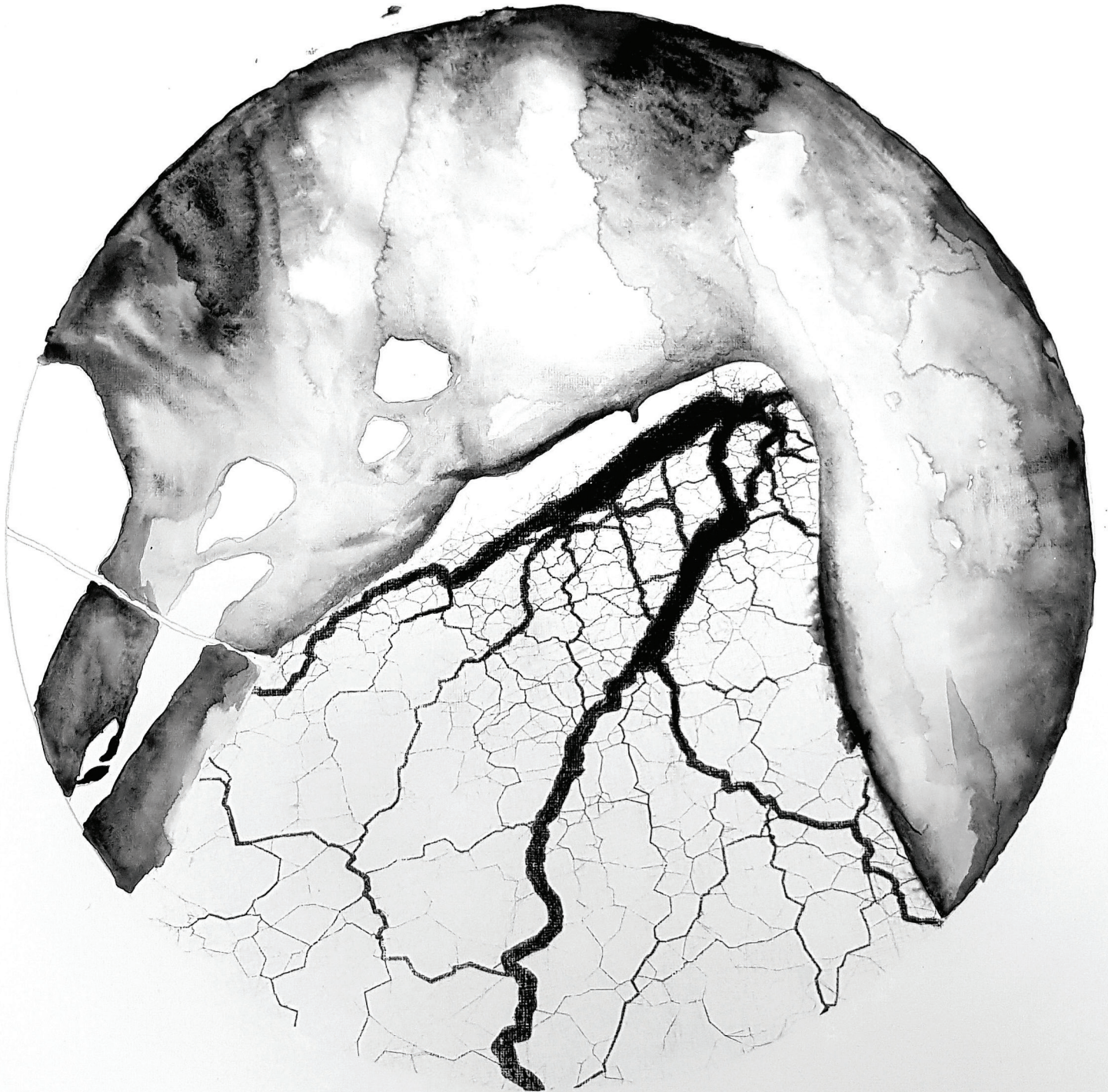
# Pudong Auditorium

## Studio

Alexandra Jucutan



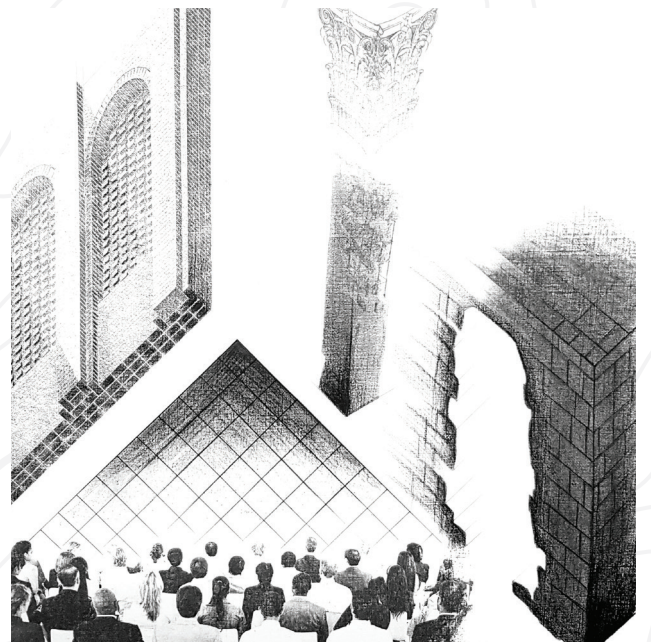
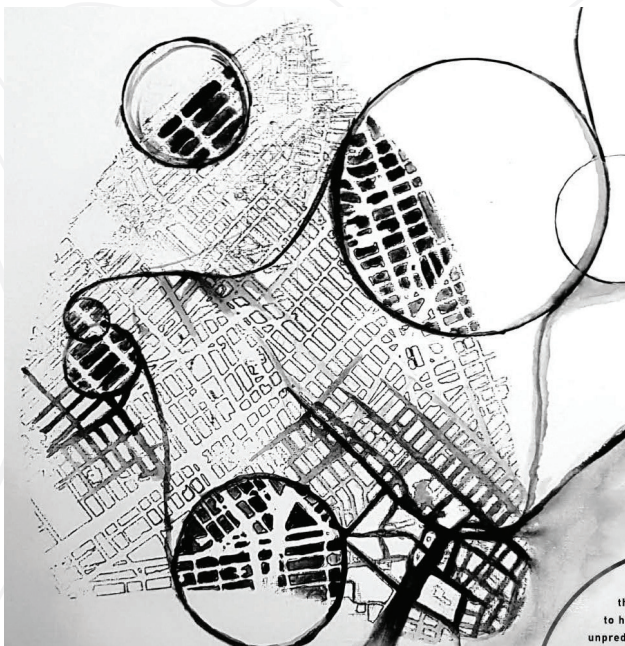
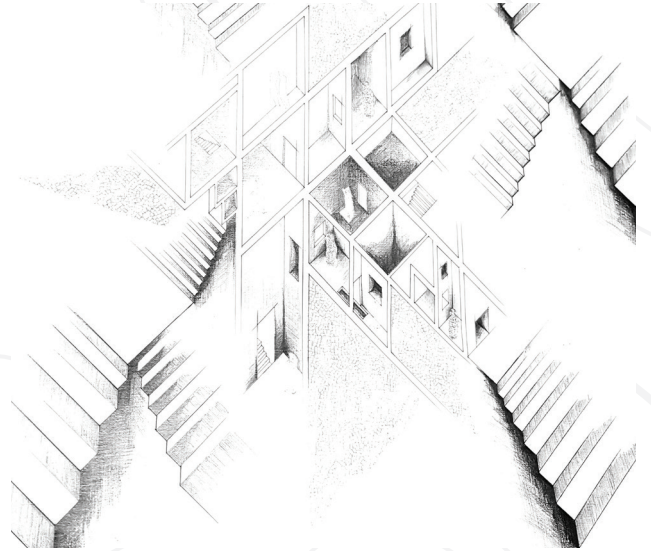


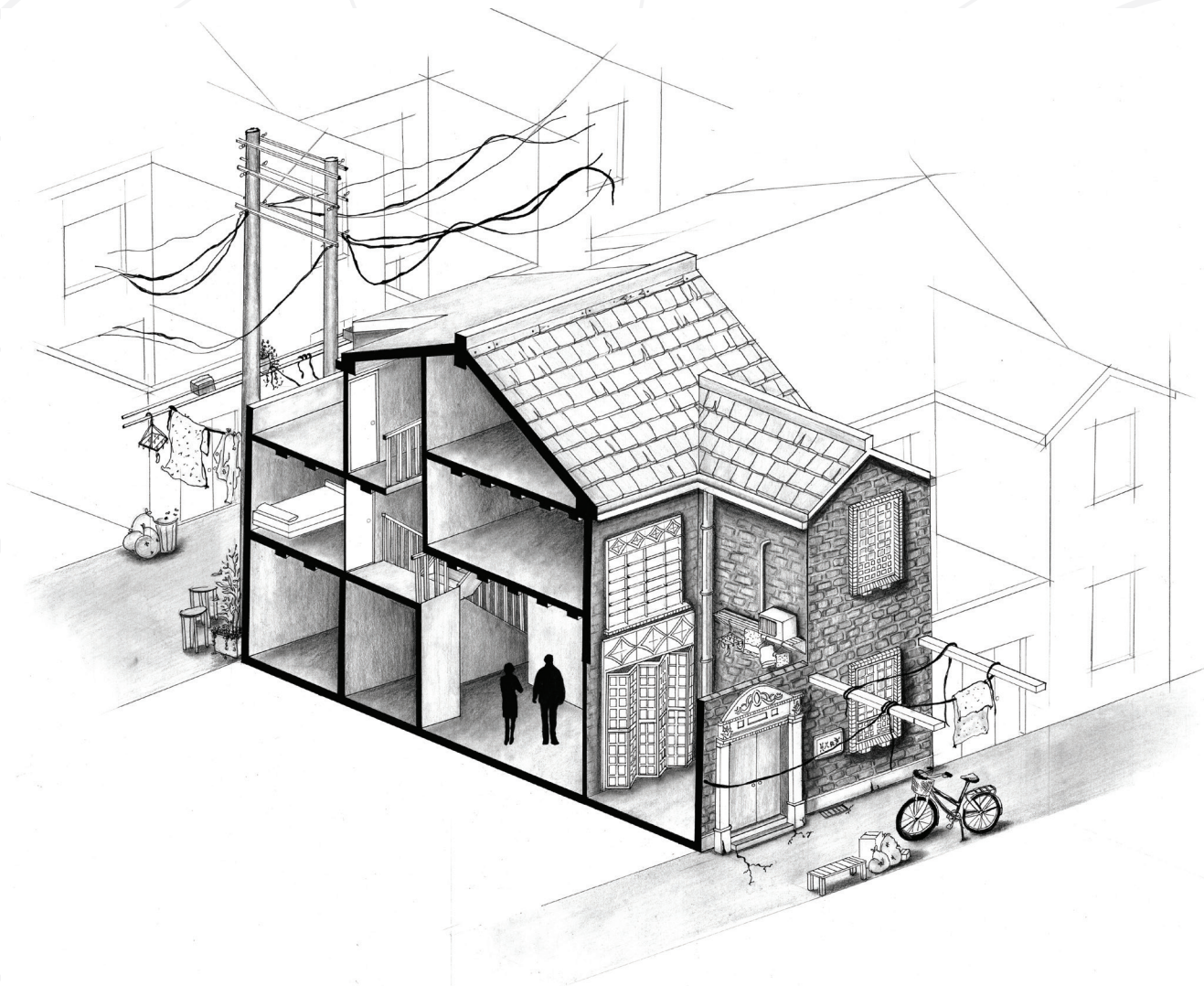


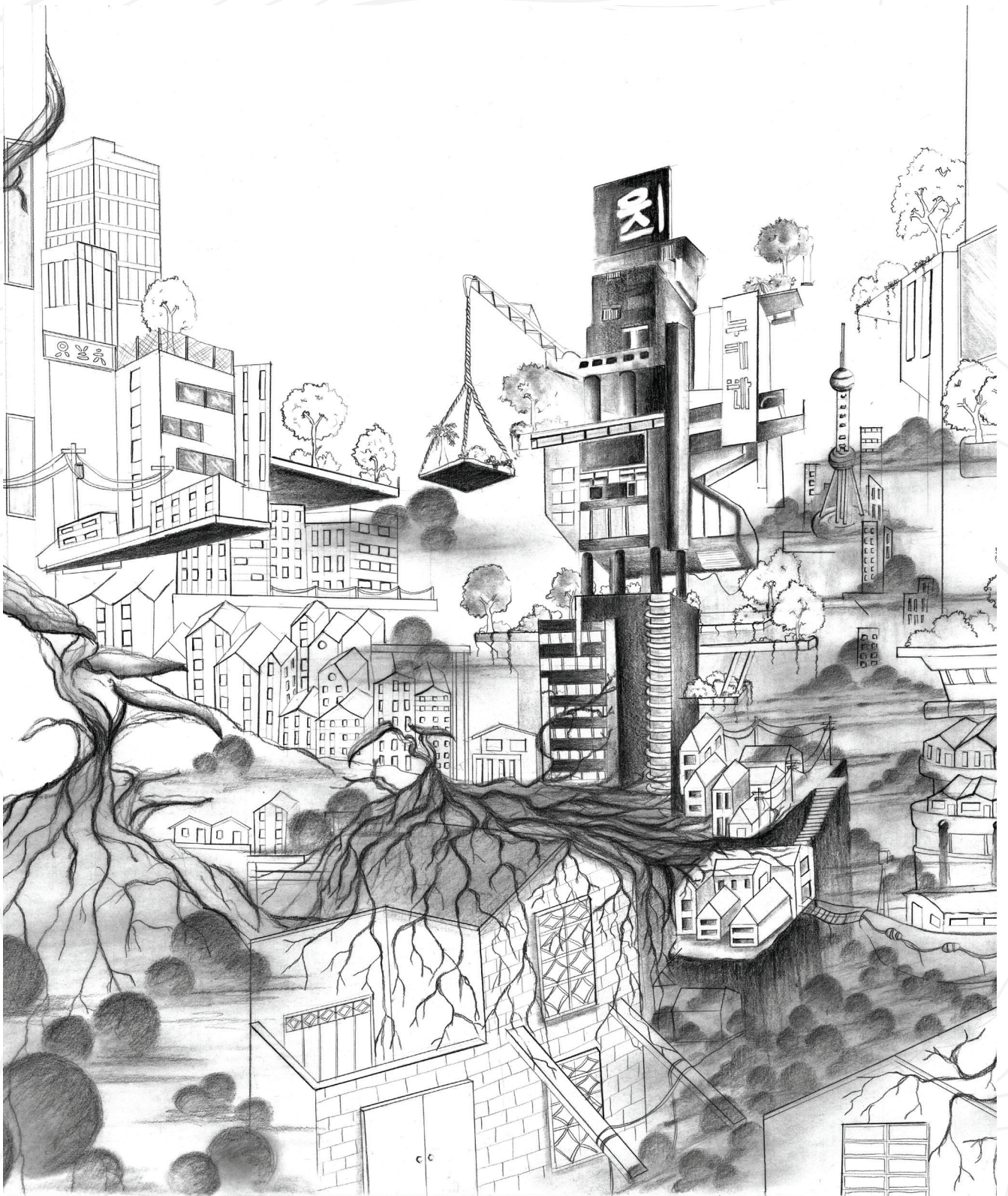
# A Layered Chaos Studio

Bhavya Gajjar

We live in a world of uncertainty and confusion. Villages and cities are abandoned and gradually changing while people, machines and buildings all struggle to survive and control. Architecture, apart from conquering the third dimension, height, has changed its content. Attention has diverted from the construction of monuments to furnishing of services and facilities for people. Imagining the future does not work anymore, there is unpredictability of action among certain categories of designers, architects and urban planners. When the system becomes so complex that you cannot predict it anymore, design becomes something fundamentally different – you can no longer design the outcome. With everything we do now, we must question our ability to predict and create a future.





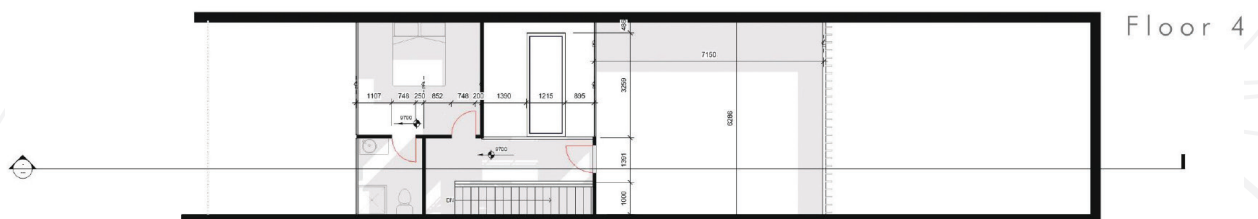
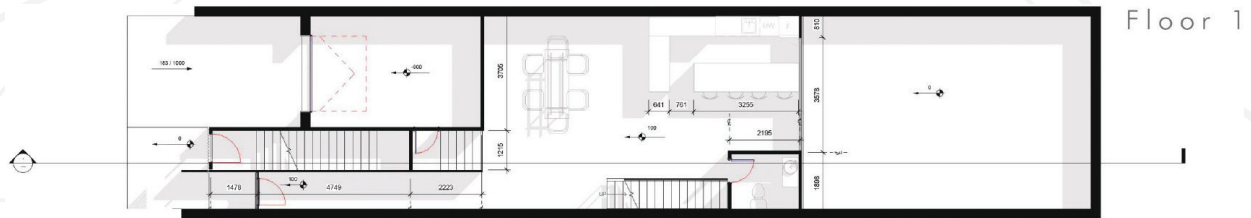




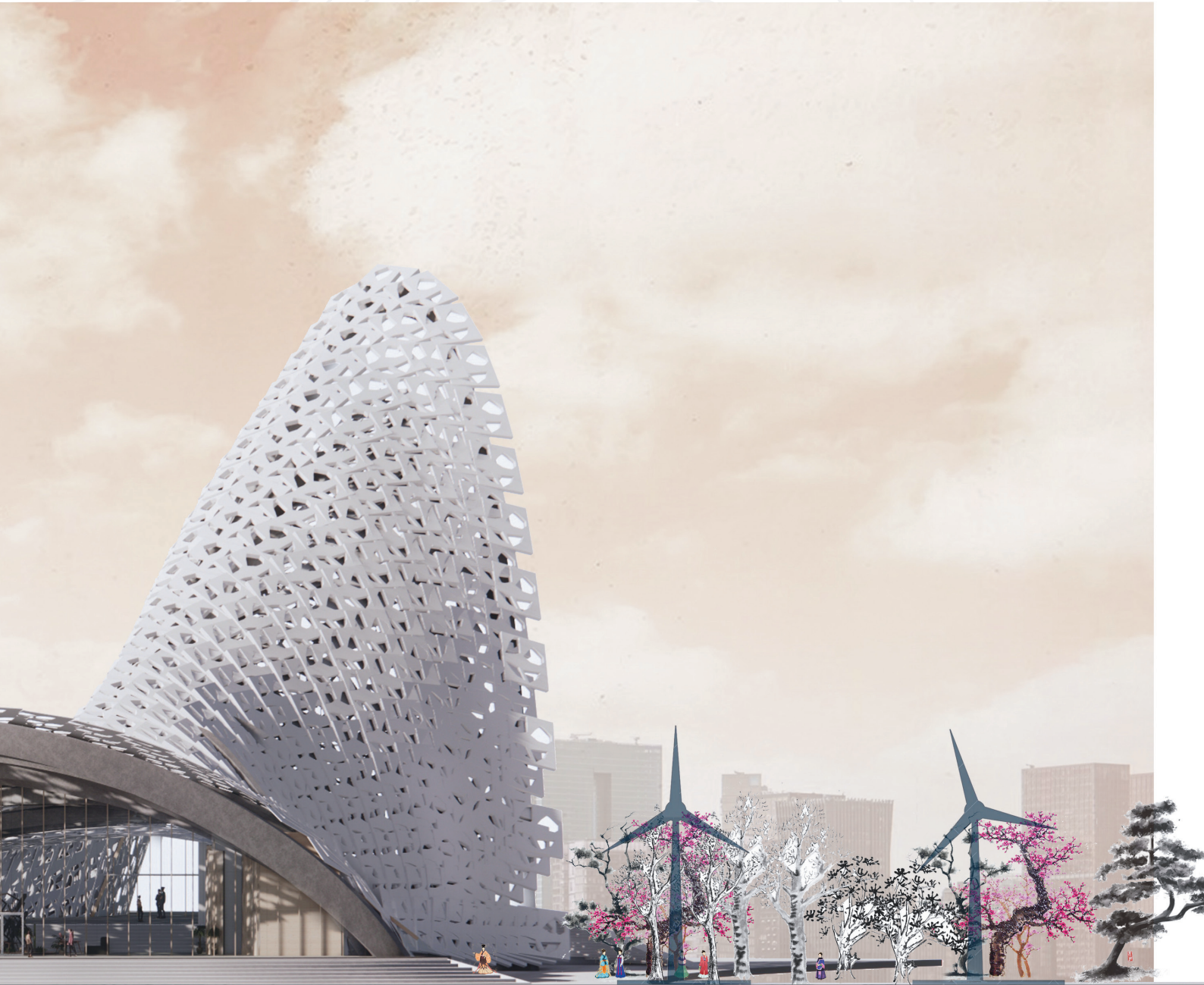
# Vertical Studio

## Kiwi (Sub) Urbanism: Rethinking the Kiwi Suburb

Oliver Higgins



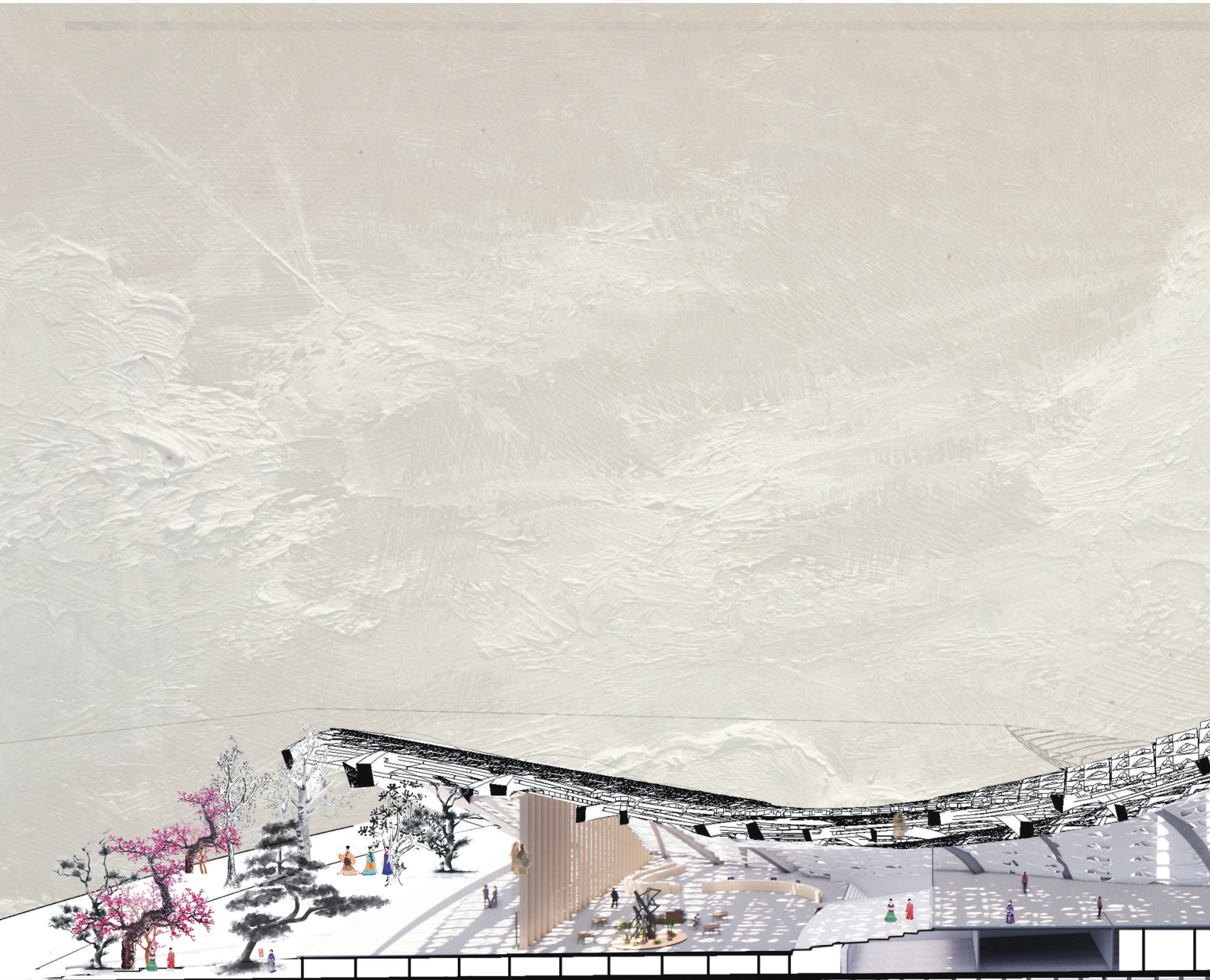


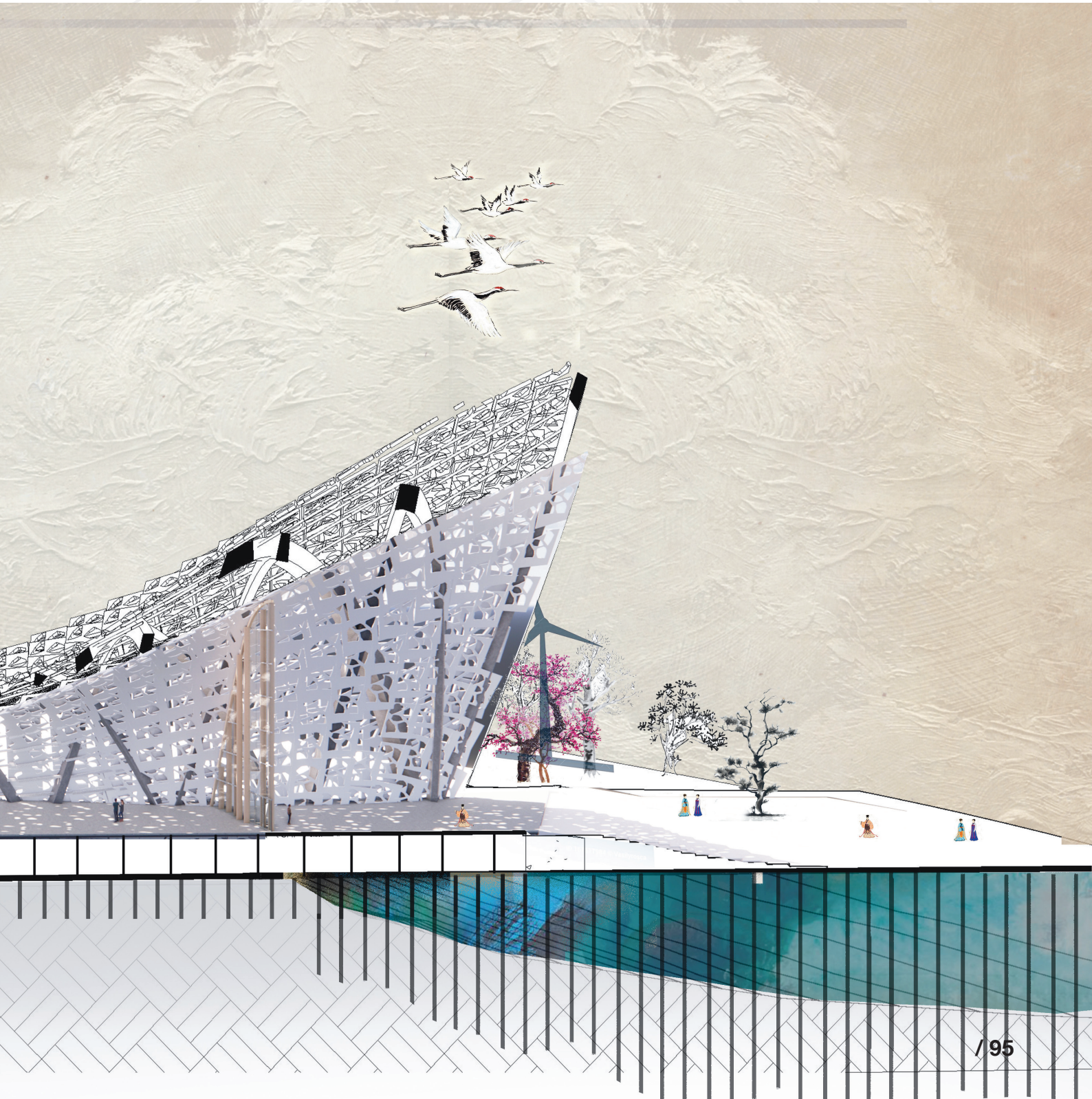


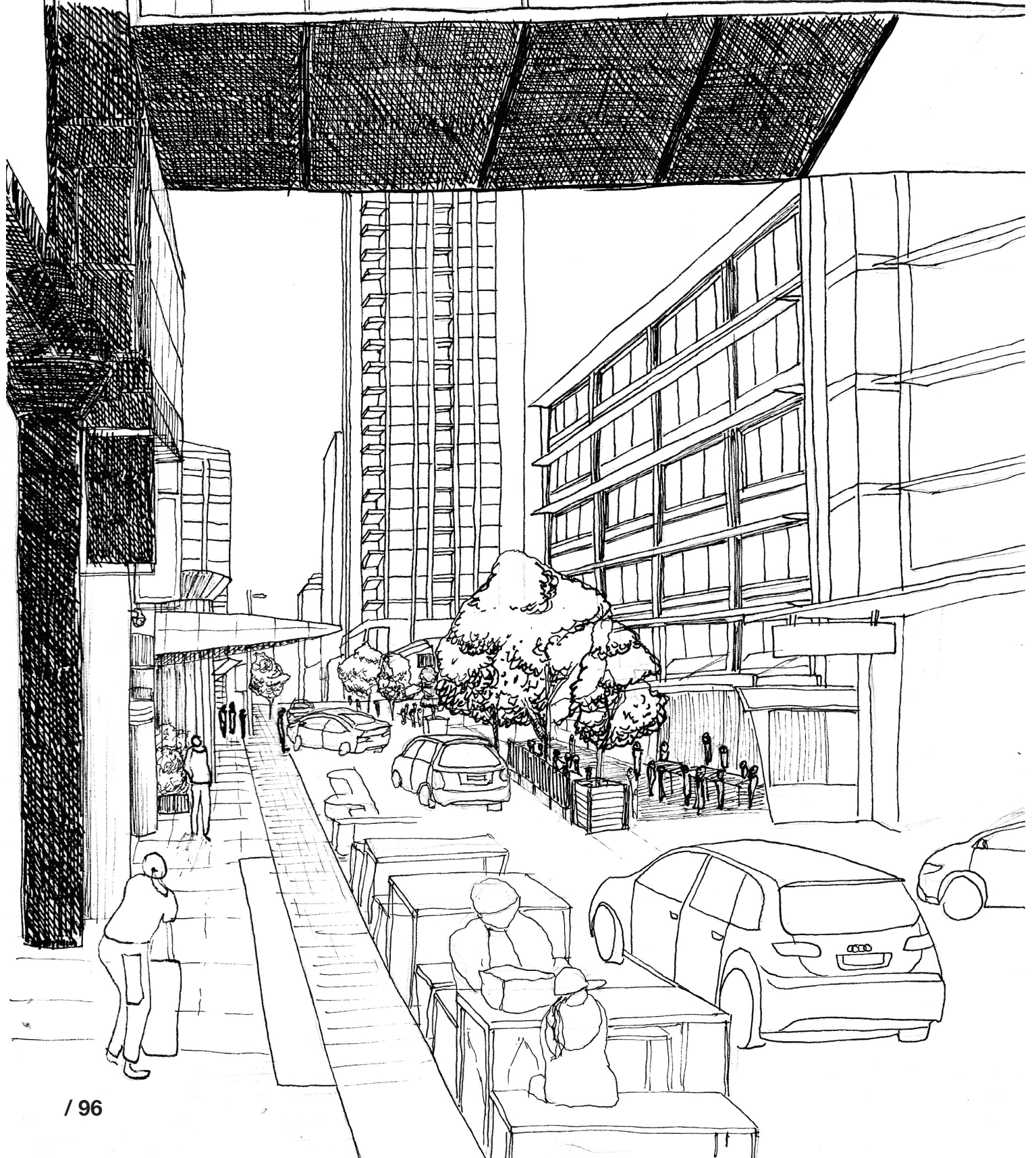












# Federal Street

## Urban Design

by Samuel Oledan

This project for Critical Studies 4 explores basic urban design principles by investigating an area of the urban fabric containing a public outdoor space. The investigation included drawings and a critique of the qualities of the space such as proportions, scale, visual connections and relationships between buildings, spaces and people. It is important to understand how the perception of the area and its conditions influence how people use them. I chose to study Federal Street, a pedestrianised street in central Auckland. The street functions as a movement space and an experience space, made up of restaurants and outdoor

seating for locals and tourists. Through site visits and analysis, I found the need for cities to strengthen their public spaces, especially near landmarks.

Federal Street demonstrates this through its level of architectural detail and richness. It affects engagement, walking speed and time spent on the street and with other people. Federal Street has a strong sense of linearity. Without its details, it would not have a positive impact on the people that use the street and would not be the destination it is today.

